

## **Appendices**

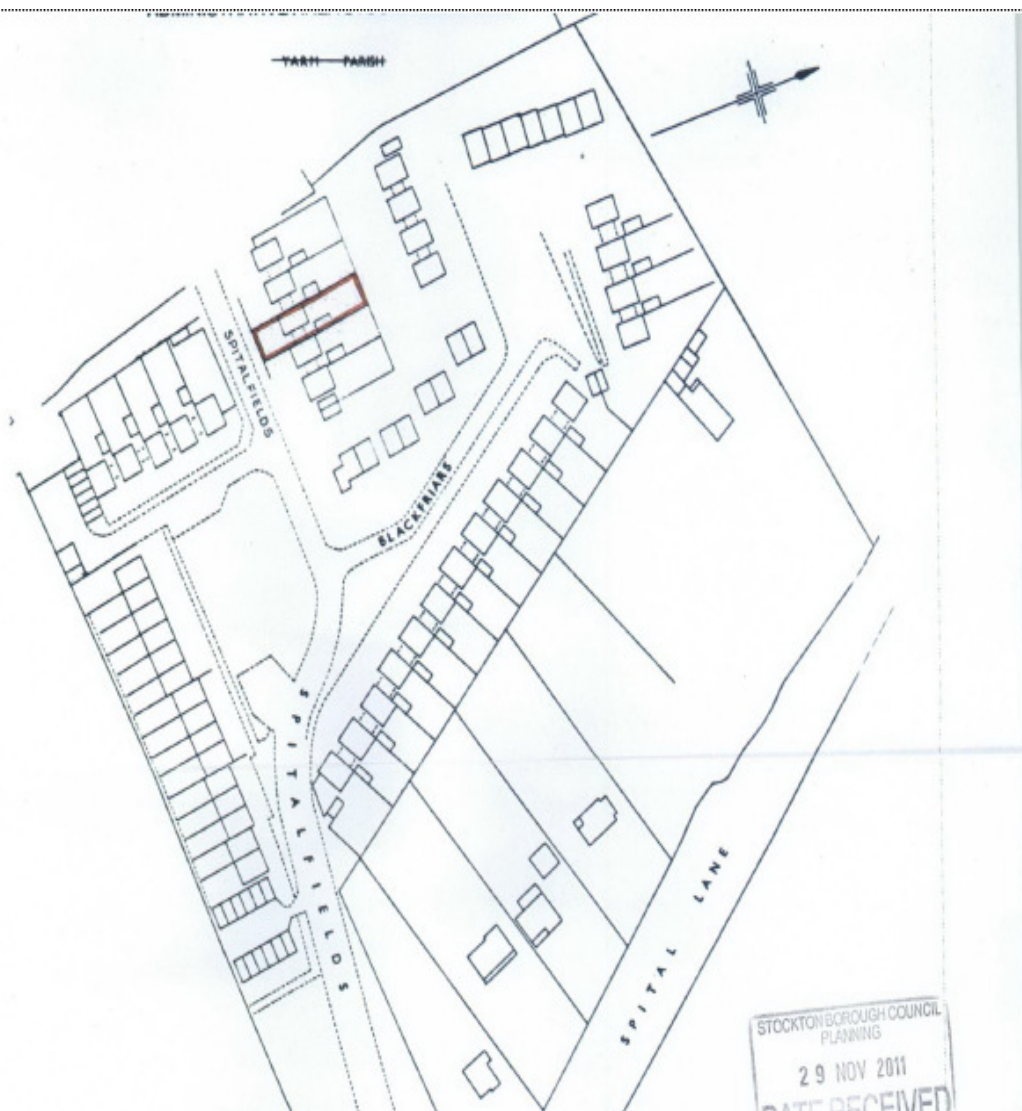
11/3029/FUL

Revised application for two storey extension to the side, single storey extension to rear with chimney and canopy to front (Part retrospective)

6 Spitalfields, Yarm, TS15 9HH

1. Location Plan, Reference SBC0001
2. SBC location plan
3. Existing and Proposed Site layouts, Plan No Spital/02 Rev P3
4. Existing Elevations and floor plans, from Plan No Spital 01 Rev P14
5. Proposed Floor Plans, from No Spital 01 Rev P14
6. Proposed Elevations, from Plan No Spital 01 Rev P14
7. Proposed Elevations, from Plan No Spital 01 Rev P14, highlighting differences from most recently approved scheme
8. Proposed front and rear elevations from plan Spital/01 Rev P14
9. Proposed front and rear elevations from approved plan Spital/01 Rev P10 from Planning Approval reference 09/1532/REV, plan dated 20.11.2009
10. Proposed front and rear elevations from approved plan Spital/01 Rev P3 from Planning Approval reference 08/1971/FUL, plan dated 27.08.2008
11. Site photos
  - a) Front elevation of application site as of 5<sup>th</sup> January 2012
  - b) Rear elevation of application site as of 5<sup>th</sup> January 2012
  - c) View from street scene, east to west as of 5<sup>th</sup> January 2012
  - d) View from street scene, west to east as of 5<sup>th</sup> January 2012
  - e) Front elevation of No 12 Spitalfields featuring canopy to front
  - f) Front elevation of No's 4 and 6 The Larun Beat featuring canopy above garage to side (No 6)
  - g) Front elevation of No 2 The Larun Beat featuring canopy and single storey extension to front, as per planning approval 05/1771/FUL

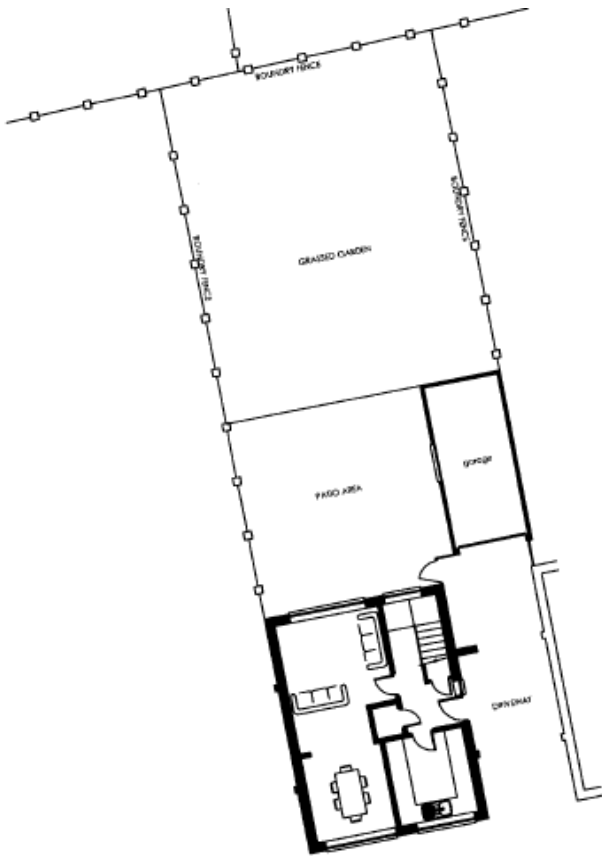
# 1. Location Plan



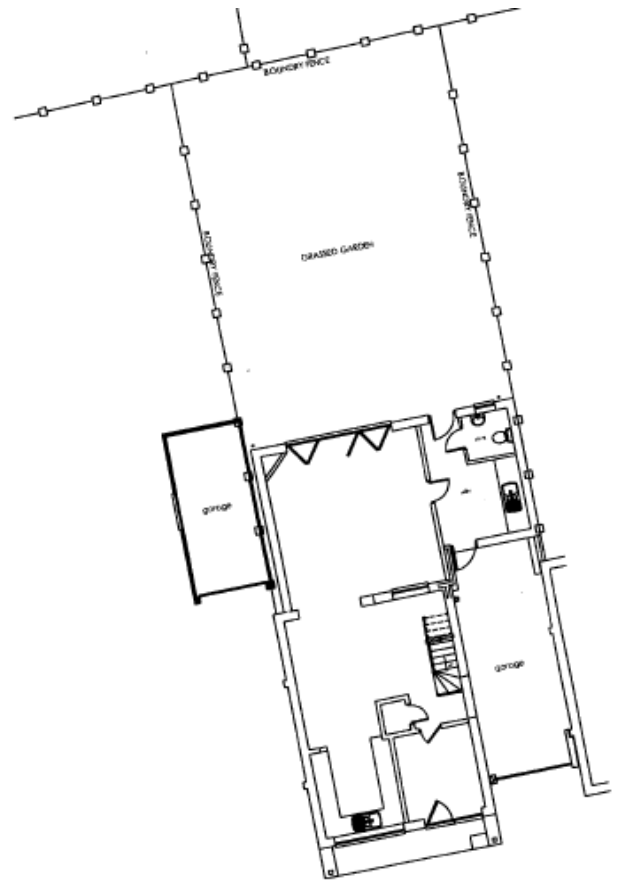
2. SBC Location Plan (for clarification)



3. Existing and Proposed Site layouts, Plan No Spital/02 Rev P3

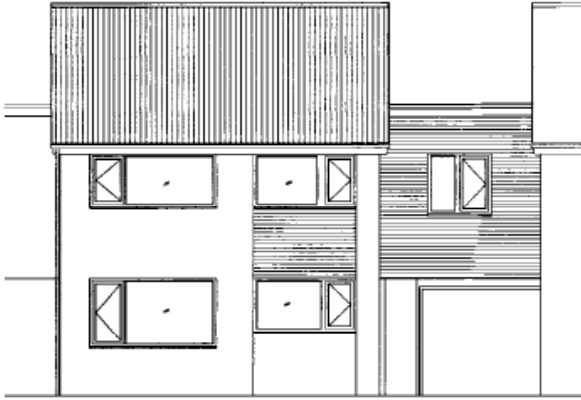


EXISTING SITE LAYOUT

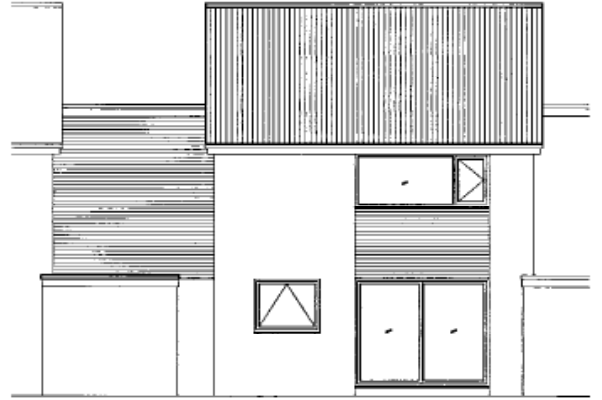


PROPOSED SITE LAYOUT

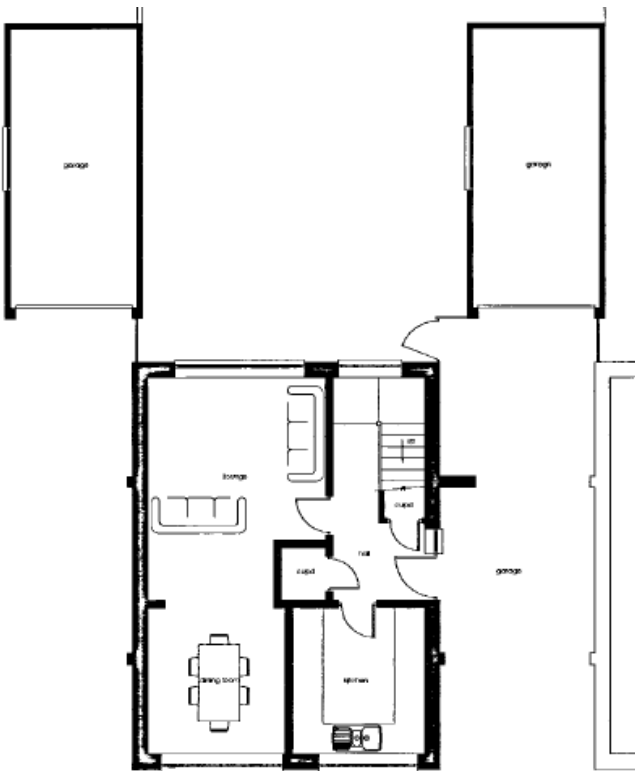
4. Existing Elevations and floor plans, from Plan No Spital 01 Rev P14



EXISTING FRONT ELEVATION



EXISTING SIDE ELEVATION



EXISTING GROUND FLOOR PLAN



EXISTING FIRST FLOOR PLAN



# 6. Proposed Elevations, from No Spital 01 Rev P14

ARCHITECTURAL ELEVATION

ARCHITECTURAL ELEVATION



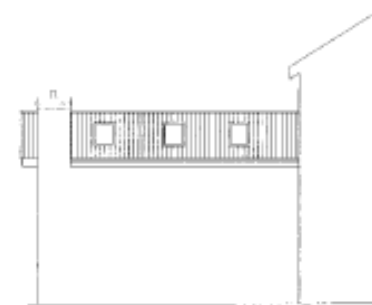
PROPOSED FRONT ELEVATION



PROPOSED REAR ELEVATION



PROPOSED SIDE ELEVATION



7. Proposed Elevations from Plan No Spital 01 Rev P14 –indicates changes from most recently approved application (09/1532/REV, as detailed within report).

REAR ELEVATION (SEE PLAN) 01

REAR ELEVATION (SEE PLAN) 02



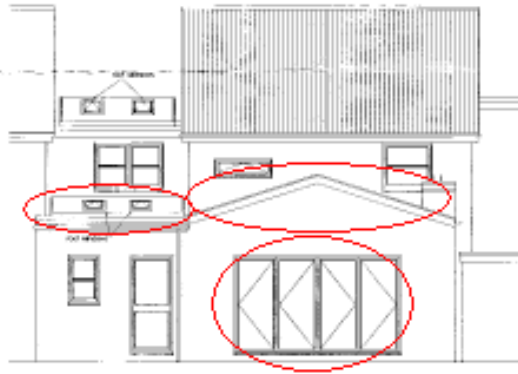
25' 0"

25' 0"

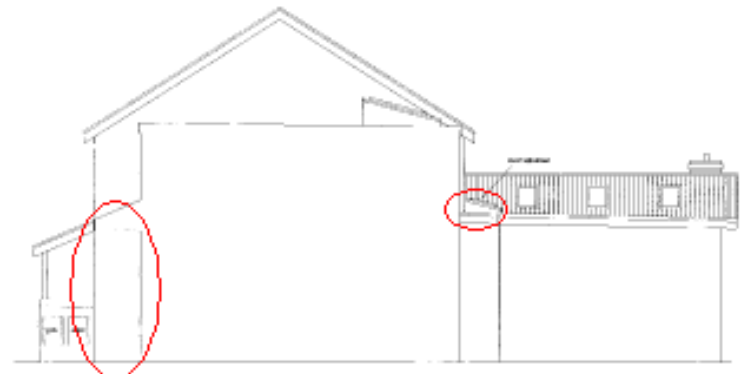
25' 0"

25' 0"

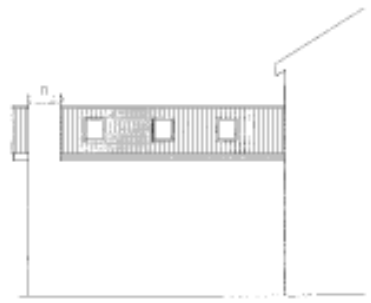
REAR ELEVATION (SEE PLAN) 01



REAR ELEVATION (SEE PLAN) 02

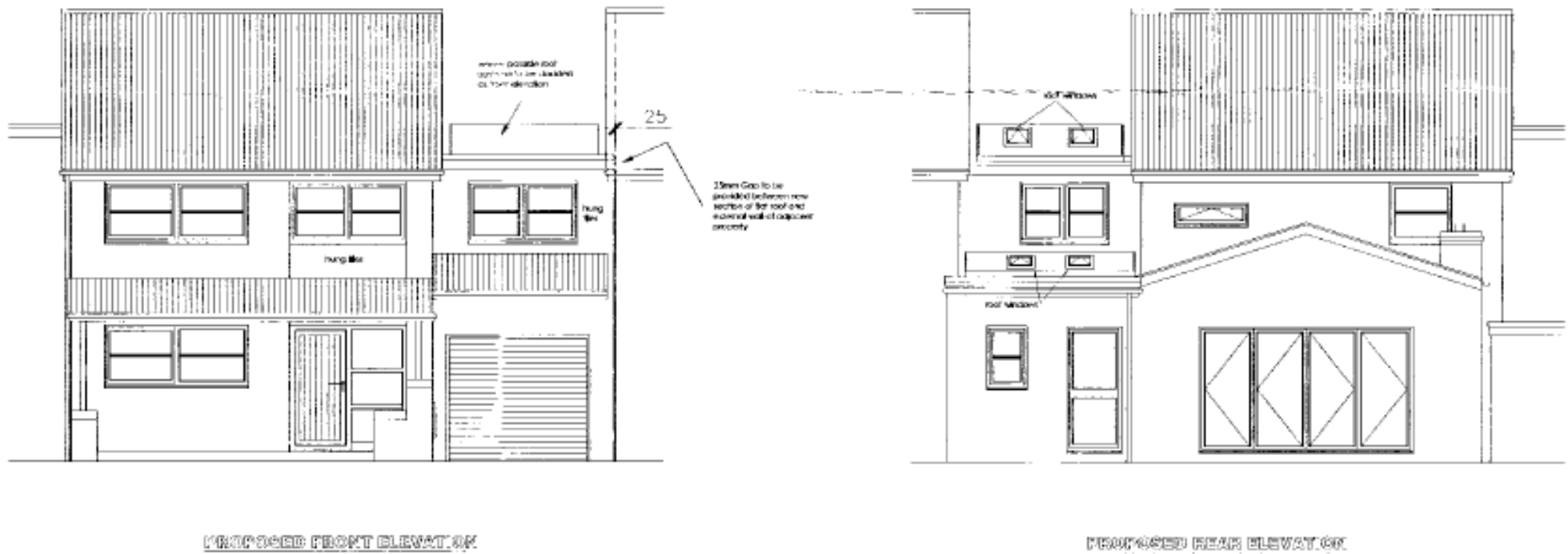


REAR ELEVATION (SEE PLAN) 03





8. Proposed front and rear elevations, from No Spital 01 Rev P14



9. Proposed front and rear elevations from approved plan Spital/01 Rev P10 from Planning Approval reference 09/1532/REV, plan dated 20.11.2009



PROPOSED FRONT ELEVATION

PROPOSED REAR ELEVATION

NO GRADIENT ON SEPERATING LAYER ON  
70X 50 JOISTS @ 400CRS WITH 100MM TP 10

10. Proposed front and rear elevations from approved plan Spital/01 Rev P3 from Planning Approval reference 08/1971/FUL, plan dated 27.08.2008





11. Site photos

a) Front elevation of application site as of 05.01.2012



b) Rear elevation of application site as of 05.01.2012



c) View from street scene, east to west



d) view from street scene, west to east



e) Front elevation of No 12 Spitalfields featuring canopy to front



f) Front elevation of No's 4 and 6 The Larun Beat. No 4 features a canopy above the garage to the side.



g) Front elevation of No 2 The Larun Beat featuring canopy and single storey extension to front, as per planning approval 05/1771/FUL.

